



## **AUTOMATIC PANEL SIZING CENTER**

**HERMES 70CNC**







# NIMAC GROUP

- 1977 **NIKOLAIDIS MACHINES.** Firm's foundation by Anestis Nikolaidis as a beam saw manufacturing industry.
- 2000 **Exports to the international market.** Constant presence in the largest exhibitions globally.
- 2008 **New state-of-the-art factory** 4.000m<sup>2</sup> in Kavaleri, Thessaloniki.
- 2011 **NIMAC GROUP.** The new international trademark. High end manufacturing certified with **ISO 9001**. Production of wood working machines "made in NIMAC" well established in the international stage.
- 2016 **NIMAC CNC Laser.** Manufacturing of Laser engraving and cutting CNC machines.
- 2017 **NIMAC Robotics.** Developing of the Robotics and Automation department.
- 2018 The export rate reaches **90% of the total production** with representation in 5 continents.
- 2019 Participation for the fifth time in a row in **Ligna** (Germany), world's most famous woodworking exhibition. Exports to North Europe.
- 2020 **Introduction of EtheCAT technology.** State-of-the-art technology in all the electronic and control elements of the machines.
- 2021 **New investments** made in CNC machines to enhance and improve the quality of manufacturing.
- 2022 **Net metering** and investment in **Green Energy.** Installation of solar panels to move the factory forward energy autonomy.
- 2023 Foundation of **CNC Academy.**



1977





# HERMES

## 70 CNC

### The ideal beam saw for medium sized furniture factories

- Designed according to the top standards
- Heavy-duty construction without restrictions
- Applied solutions that maximize cutting quality
- High quality components
- Servomotors on saw carriage and pusher. Optimized cutting cycles on the carriage, pressure beam and pusher groups.
- Ether Cat technology
- Silent movement of the saw carriage.
- Machine preparation for lifting table (optional)
- Blade projection according to panel thickness
- Grooving (optional)
- Cut out (optional)



Heavy duty (H) beams pusher movement by rack - pinion system (Atlanta). Smooth movement without vibrations.

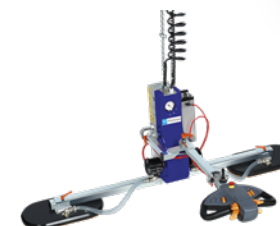


Powerful pusher for panel movement  
Gripper's projection 100mm  
Rack-pinion pusher travel system  
Sliding on high quality round linear guides  
Max accuracy up on double measuring system: thanks to magnetic tape and servo.



Blade projection	<b>70mm</b>
Cutting length	<b>2900mm, 3200mm, 3800mm</b>
Saw carriage speed	<b>5-100m/min</b>
Main motor	<b>10Hp</b>

#### Additional Equipment:



Panel storage system with vacuum-Automated magazine for the optimized management of panels.



Front side loading platform





# HERMES

7 0 T L C N C

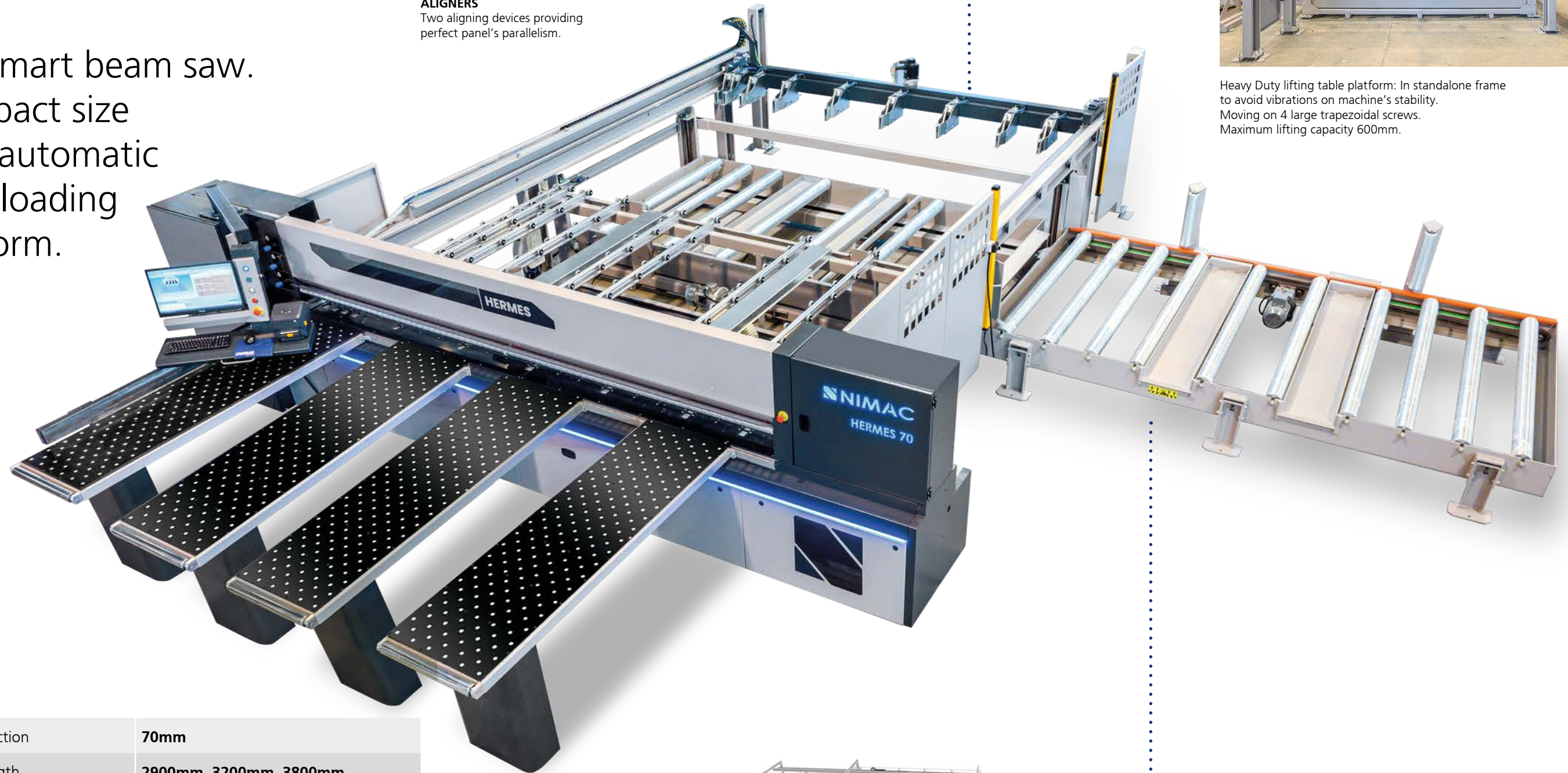
The smart beam saw.  
Compact size  
with automatic  
back loading  
platform.



**ALIGNERS**  
Two aligning devices providing perfect panel's parallelism.



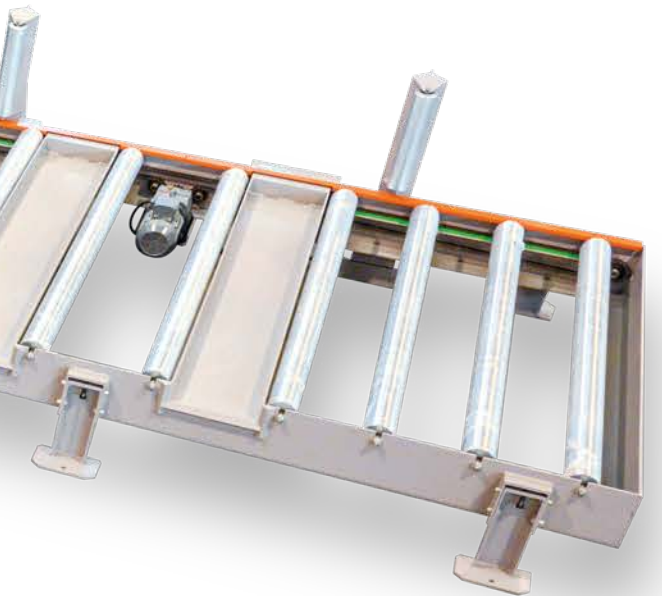
Heavy Duty lifting table platform: In standalone frame to avoid vibrations on machine's stability. Moving on 4 large trapezoidal screws. Maximum lifting capacity 600mm.



Blade projection	70mm
Cutting length	2900mm, 3200mm, 3800mm
Saw carriage speed	5-100m/min
Main motor	10Hp



Automated magazine – panel storage system



Side loading platform

**Additional equipment:**



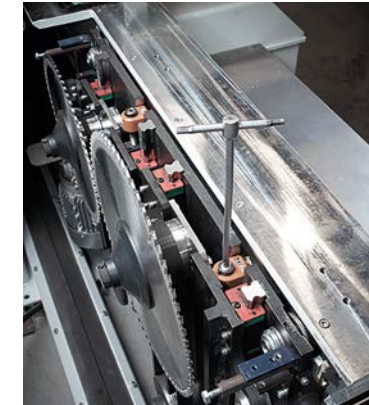


# High expectations based on top quality components

- EtherCat technology: The leading industrial protocol for real time communication of all axes, minimization of idle times and maximum accuracy. Reduced wiring, easy maintenance and zero problems in electrical parts
- Robotic cables. Servo drives on saw carriage and pusher axis
- Powerful controller TPA including the most advanced software with 3D real time graphic simulation with messages for the operator
- Cutting Optimizer software
- UPS for PC protection
- Silent Motion. Unique technology for saw carriage motion with industrial belt. No vibrations – fast movement, perfect cutting quality. Maintenance-free system. Servomotor for saw carriage movement (speed up to 100 mt/min)
- LED lights: operation-color visualization according to the machine's condition. Mounted on machine's frame
- Precision LED System for Accurate Material Placement on NIMAC Beam Saws (optional)
- Robust construction and hi-quality linear shafts provide stability and accuracy on cutting line
- Modern pusher controlled by servo motor. Transmission on rack-pinion and sliding on round linear guide. Maximum accuracy thanks to double measuring system: servo motor and magnetic encoder. Pusher's backward speed 50m/min
- Supporting aluminium bars with rubber rollers for smooth panel sliding without damages
- Pressure beam operation according to panel's thickness
- Efficient aspiration tubes on 4 points
- Spraying system for acrylic panels (optional)
- Saw-blade rpm control by inverter (optional)
- Blade projection by servo motor (optional)



High stability linear guides in all axes



Depth grooving regulation by Sikos. Scoring regulation (left-right) from outside kit. By Sikos (optional electronic regulation with servo by PC)



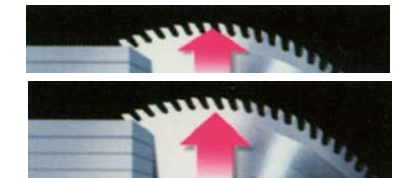
Practical and reliable blade change system (easy change) by using only 1 key



Side Aligner 50-1100mm



Grooving system on automatic sequence



Automatic blade projection (2 pos) according to panel's thickness



Cut-out

## Precision LED System

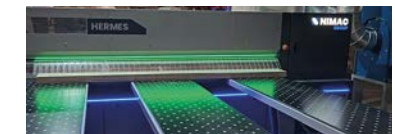
A technological solution designed for easy, ergonomic and efficient machine operation. This device serves as a helpful guide for operators during cutting patterns, providing assistance throughout the entire process.



**Blinking White Light**  
Indicated precise panel positioning - Error-free system



**Blue Light**  
Rip Cut - Piece not finished, needs to be repositioned in the machine



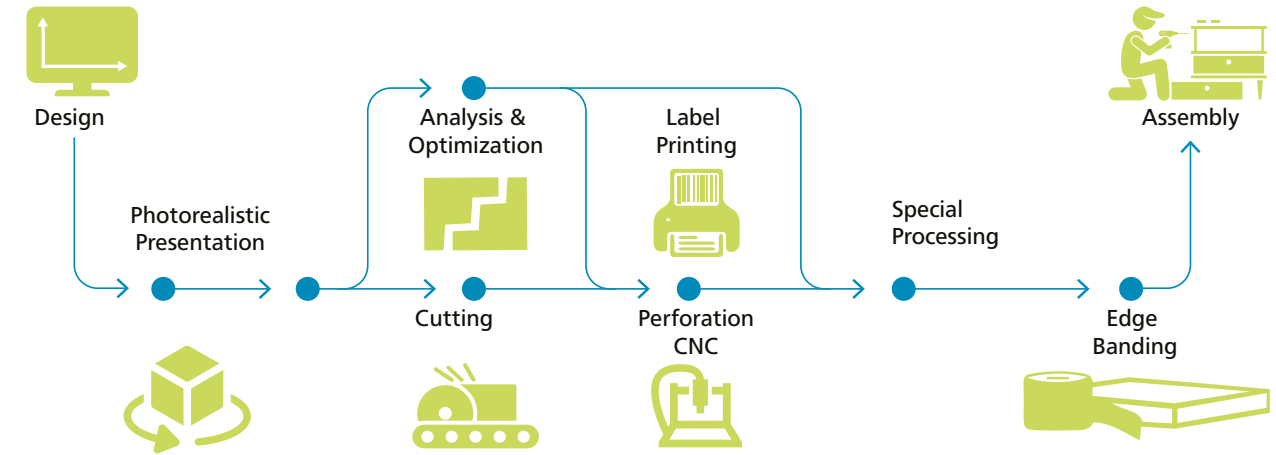
**Green Light**  
Finished panel – offload





# COMPLETE SOFTWARE SOLUTIONS

From design to final wood working operation on min time



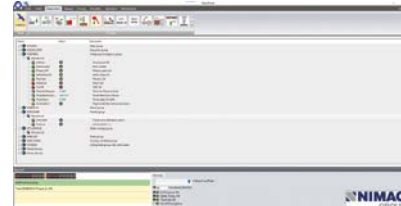
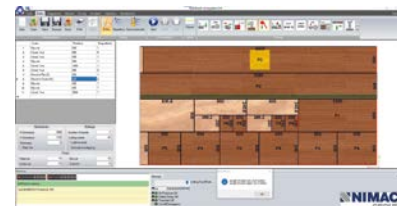
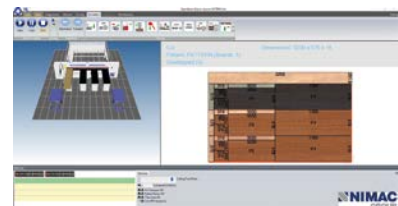
## Easy use by powerful software



- Windows 10 and 3d visual program on real time.
- OPTICUT top optimizing program.
- High analysis monitor for easy use.

- TFC (Tension Free Cut) management allows additional grooving and cuts to be made at the longitudinal cuts, as to eliminate the banana effect in the longitudinal cuts present in the cutting pattern.

Smart cut: bigger strips cutting capacity thanks to smart software-production increase.



- Easy use software with advanced operations
- Graphical simulator easy programming even on complicated cutting maps
- 3D visualization on real time that shows to used the panel.

- Production report about cutting measures, PVC edge banding and working time
- OPTICUT LITE.
- powerful optimization provide higher production on min time.

- Error checking menu provide full information about the machine's condition. And ensures the fastest problem's solution
- Connection with external furniture production software and optimizer software's with cost analysis and storage control.

### Design

Full parametrical design. Powerful box processor and large library.

### Rendering

Impressive photorealistic presentations.

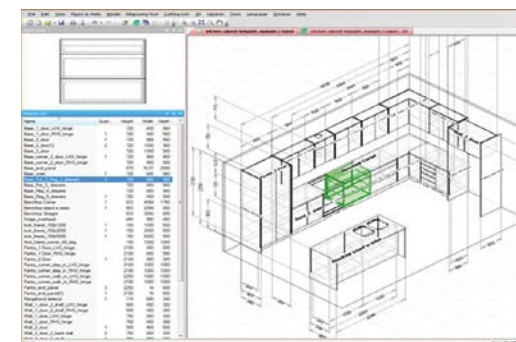
### Analysis & Optimization

Large number of automatic reports including list of materials, invoices, orders, lists and nesting.

### Production

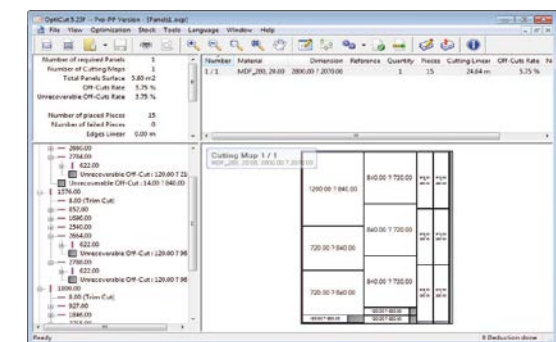
Post processor for automatic execution on beam saws Nimac and to any cnc router brand.

## optional software



### FURNITURE DESIGN SOFTWARE

Interactive design and construction software cabinets, based on a strong methodological idea. Automatic management of all details assembly and construction. Accurate cutting lists. Export of executions file (post processor) for CNC machines.



### OPTICUT PRO PP: CUTTING OPTIMIZATION SOFTWARE, CUTTING / PVC COSTING AND WAREHOUSE

Based on a powerful algorithm that calculates different sheets, materials and cutting methods. It has water calculation, PVC, leaf spinning, parametric labels and warehouse management. Impressive performance: Sorts cutting lists to the most efficient layouts in seconds, saving time and money.



# HERMES 70 CNC/HERMES 70TL CNC

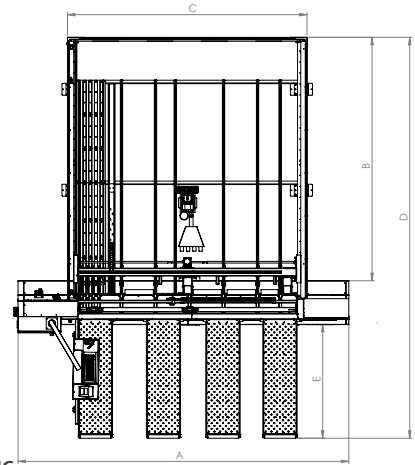
## TECHNICAL DATA

Cutting length	2900mm	3200mm	3800mm
Pusher's stroke	2900mm	3200mm	3800mm
Blade projection	70/75mm		
Main saw diameter	300-320mm		
Scoring saw diameter	160mm		
Main motor power	10Hp		
Scoring saw power	2Hp		
Saw carriage speed	5-100m/min		
Pusher's travel speed	0-50m/min		
Automatic side aligner	50-1100mm		
Grippers quantity (standard)	5	5	7

Magnetic tape for measuring on pusher stroke  
 Pressure beam with grooves provides pusher to arrive up to last small cut  
 Easy change blade system  
 Scoring saw with the ability to fine-regulation vertically and horizontal  
 Top controller from TPA  
 New 3D imaging software with built-in optimal cutting program and possibility of automatic panel measurement  
 PC with Windows 10 and hard disk SSD  
 Optimization software opticut lite (Max. 100 pieces)  
 Grooving system  
 CE safety rules ce.safety fence and protection courtin for user hands  
 Teleservice via internet  
 Electrical panel With EtherCat technology and UPS for PC protection

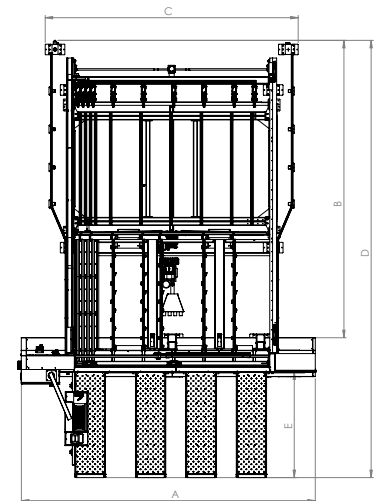
## ΕΠΙΠΛΕΟΝ ΕΞΟΠΛΙΣΜΟΣ

Air flotation tables	1300x600mm 2000x600mm
Air flotation on main machine's frame	
Grooving system	
Automatic lubrication for linear saw carriage rulleman	
Cut Out	
Automatic pressure beam according panel's height	
Post Forming	
Movable second and third table	
Extra grippers	
Aircondition on electrical cabinet	
Barcode printer and software printing module	
Laser line on cutting line	
Full office version PVC computable,warehouse management, cost analysis.	
Unlimited materials and pieces to optimize	
Movable box with Start / Stop button.	
Practical solution for managing Large Panel Length	
Kitchen Cabinet Design Software	



HERMES 70 CNC

USEFUL CUTS	A	B	C	D	E
2900 x 2900	4935	3395	3325	6170/5470	2000/1300
3800 x 3800	5835	4295	4225	7070/6370	2000/1300



HERMES 70TL CNC

USEFUL CUTS	A	B	C	D	E
2900 x 2900	4935	5000	4120	7775/7075	2000/1300
3800 x 3800	5835	5900	5020	8675/7975	2000/1300

eyeQcreative

research | technology | precision | quality | service



The technical data can vary according to the requested machine composition. In this catalogue, machines are shown with options. The company reserves the right to modify technical specifications without prior notice; the modifications do not influence the safety foreseen by the CE Norms



**NIMAC**  
GROUP

FACTORY - SHOWROOM

www.nimacgroup.eu

info@nimacgroup.eu

+30 2394053030